

1

Why does CSU care if I get a ticket?

- Educational vs. Punitive
 - Providing information now helps prevent issues in the future!
- Tips to avoid future citations
- Opportunity to intervene if students need help
 - Campus resources are available to support students if their behavior suggests something concerning is going on

2

What are your goals when you go out for the night?

- ▶ Have fun!
- ▶ Relieve stress
- ▶ See friends and meet new people
- ▶ Get home safely

Most likely, your goals for the night do not involve having a negative interaction with law enforcement!

3

What are the goals of the police when they are on patrol?

- ▶ To keep people safe
- ▶ Prevent problems before they arise
- ▶ Respond to issues that do arise
- ▶ Get home safely

Their goals do not involve having negative interactions with community members!

4

▶ These goals don't have to be in conflict.



5

Did you know... The Square in downtown is NOT public property!

- ▶ The square is private property, with public access.
- ▶ The property is jointly owned by the members businesses of the Downtown Business Association.
- ▶ It closes each night at 2:00am



6

WHY CLOSE THE SQUARE?

- Public safety (disturbances and assaults)
- Different types of crime being reported due to loitering (vandalism, littering, urinating, etc)
- Gives the police the ability to disperse a potentially volatile crowd (proactive vs. reactive)



7

True or False? You have the right to be at a bar as long as you're 21.

- False! Liquor law regulations require bar owners to remove patrons who are disruptive or who pose a threat to others.
- If you are asked to leave a bar and choose not to, you can be charged with trespassing.



8

Violation: Trespassing

Entering or remaining on private property
once you've been asked to leave.

Fine: \$150

9

Violation: Open Container

Having an open container of alcohol in:

- A public place ex. street, alleyway...
 - A vehicle
- Inside a public school/university

Fine: \$100

10

Violation: Depositing Bodily Waste

Depositing vomit, spit, urine, feces, or other bodily waste in an area/receptacle not intended for that purpose.

Fine: \$300

What is the larger impact?



11

The morning after...

A lot of businesses and people use the spaces downtown just hours after bar patrons clear out! When workers have to clean up bodily waste, it decreases quality of life for everybody.



12

Violation: Criminal Mischief

An intentional or reckless offense against another's property. It includes vandalism, graffiti, and arson.



Fine:\$500



13

Criminal mischief escalates quickly!

- ▶ Generally, criminal mischief can be classified as a felony if it causes over \$1000 in damage!
- ▶ Electronics, public equipment and installations, and other property can be difficult and expensive to repair, leaving you open to a high degree of financial liability



14

Violation: Obstructing a Police Officer

To purposely obstruct, impair, or hinder a police officer after being ordered to move on.

Fine: **\$500**

15

Violation: Resisting Arrest

Attempting to prevent or interfere with your own arrest, or the arrest of another.

16

Do I have to give my ID to the police?

- You are legally required to give your ID to a police officer if they are conducting an investigation and/or have reasonable suspicion that a crime is being committed
- If they are investigating a situation you're involved in, you are required to identify yourself!
- Failure to provide ID will likely escalate the situation and may result in obstruction charges

17

Violation: Disorderly Conduct

Making obviously offensive and threatening gestures and/or comments in public place.

Or

Fighting with another in a public place.

Fine: \$500

18

Violation: Assault

Knowingly or recklessly causing bodily injury to another person.

It is possible for a mutual fight to become an assault, depending on the circumstances and the injuries sustained.

Fine: \$500

19

What counts as self-defense?

- ▶ Simply put, acceptable self-defense is the amount of force that's needed to protect your life and get yourself away from a physically dangerous situation.
 - ▶ For example, if you're backed into a corner and need to get away, it may be self-defense to throw a punch in order to escape.
 - ▶ However, if you are in an open area and someone is verbally attempting to instigate a fight, throwing the first punch is unlikely to be seen as self-defense.
- ▶ Continuing to engage in a physical altercation past the point of self-defense may result in disorderly conduct or assault charges.

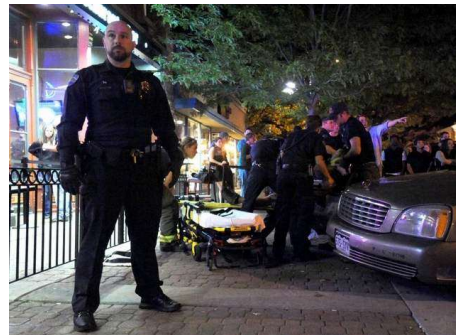
20

Looking at the bigger picture:

- What was your day/week like leading up to the incident?
- What were you thinking right before the incident occurred?
- What were the people you were with like? What was their influence?

21

Scenes like this are just one part of a vibrant Fort Collins community...



22

Your actions have impact on these aspects of the community!
You are a member of both the Fort Collins and CSU communities—enjoy all they have to offer!



23

What is something you'll do differently in the future?



24